

5 Benefits or restrictions you may see on the face of the plat:

- A. Utility easements: can be for power, water, sewer, phones, cable
- B. Access easements
- C. Greenbelts, native growth protection easement / area (NGPE/NGPA) open space
- D. Recreation areas: some plats contain features like playgrounds or bridle trails
- E. Monuments and dimensions for measuring and identifying lot boundaries

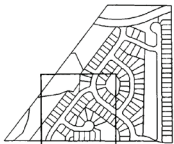
SHEET 6 OF 9

KINGSRIDGE

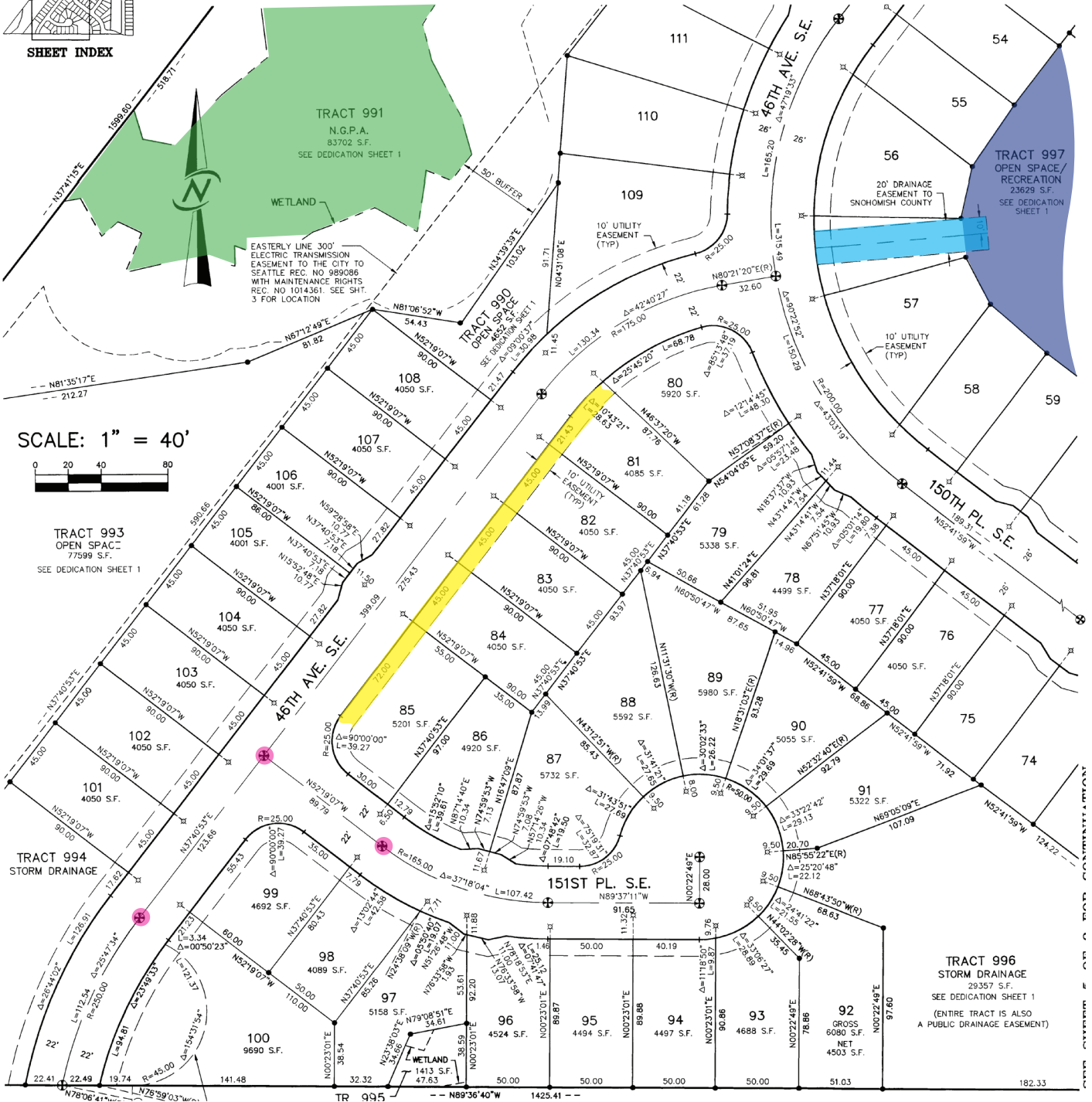
A PLANNED RESIDENTIAL DEVELOPMENT

A PORTION OF GOV'T LOT 1 (NE 1/4) AND GOV'T LOT 2 (NW 1/4) IN THE NE 1/4 SEC. 4, TWP. 27 N., RGE. 5 E., W.M., SNOHOMISH COUNTY, WASHINGTON
PFN 98-101933SD

SEE SHEET 7 OF 9 FOR CONTINUATION



SHEET INDEX



SCALE: 1" = 40'



SEE SHEET 9 OF 9 FOR CONTINUATION

SEE SHEET 7 OF 9 FOR CONTINUATION